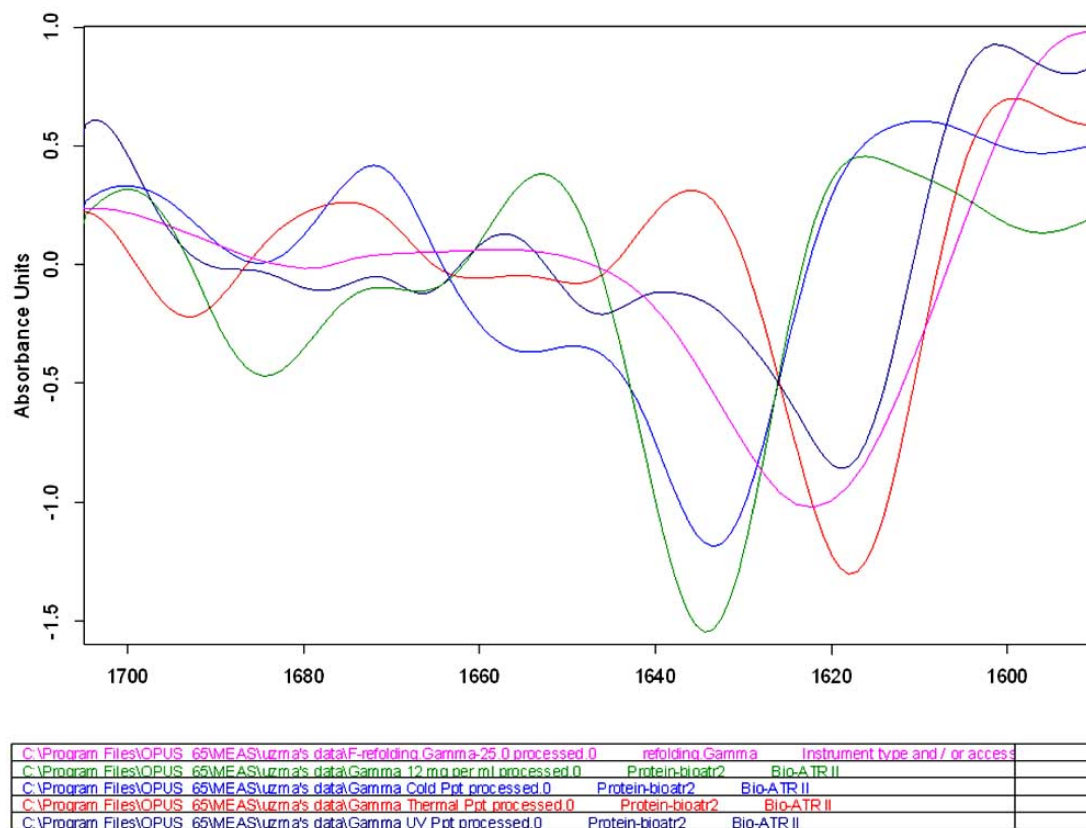
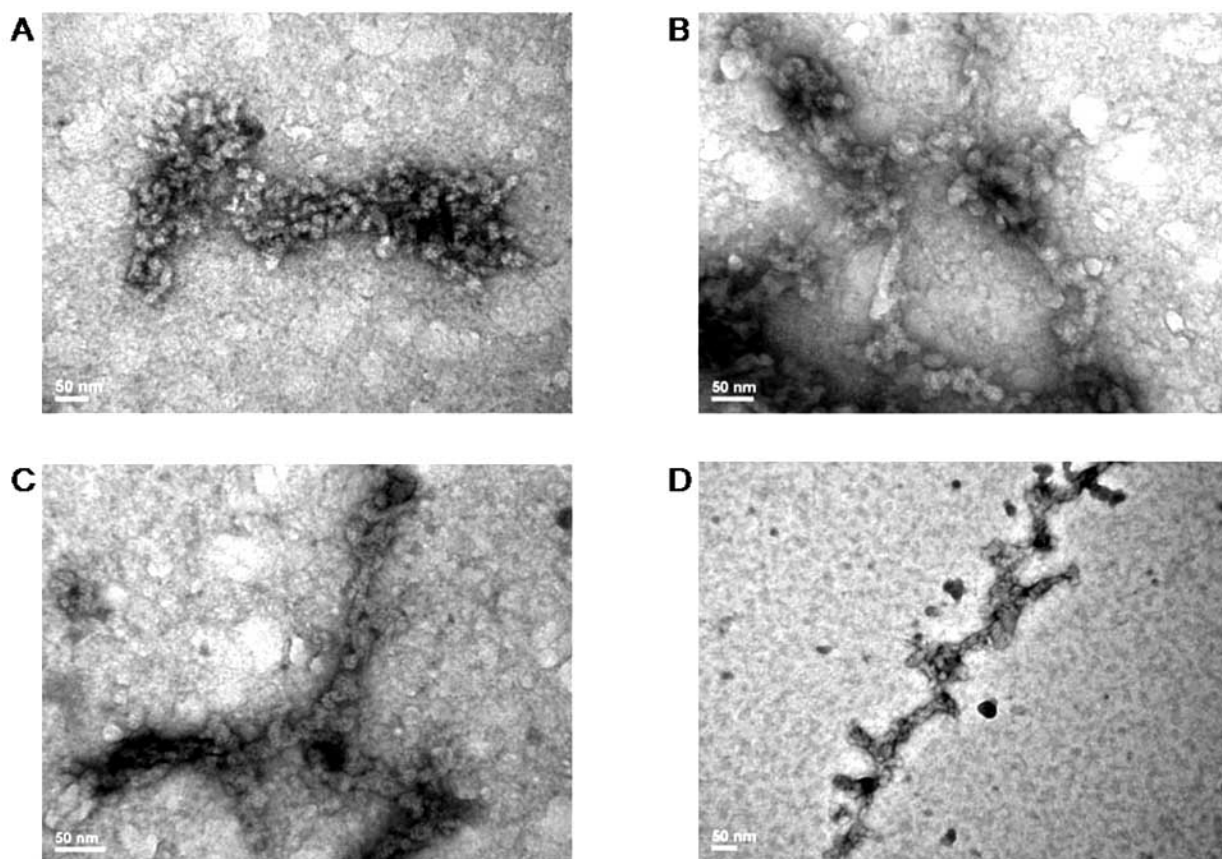


SUPPLEMENTARY MATERIAL

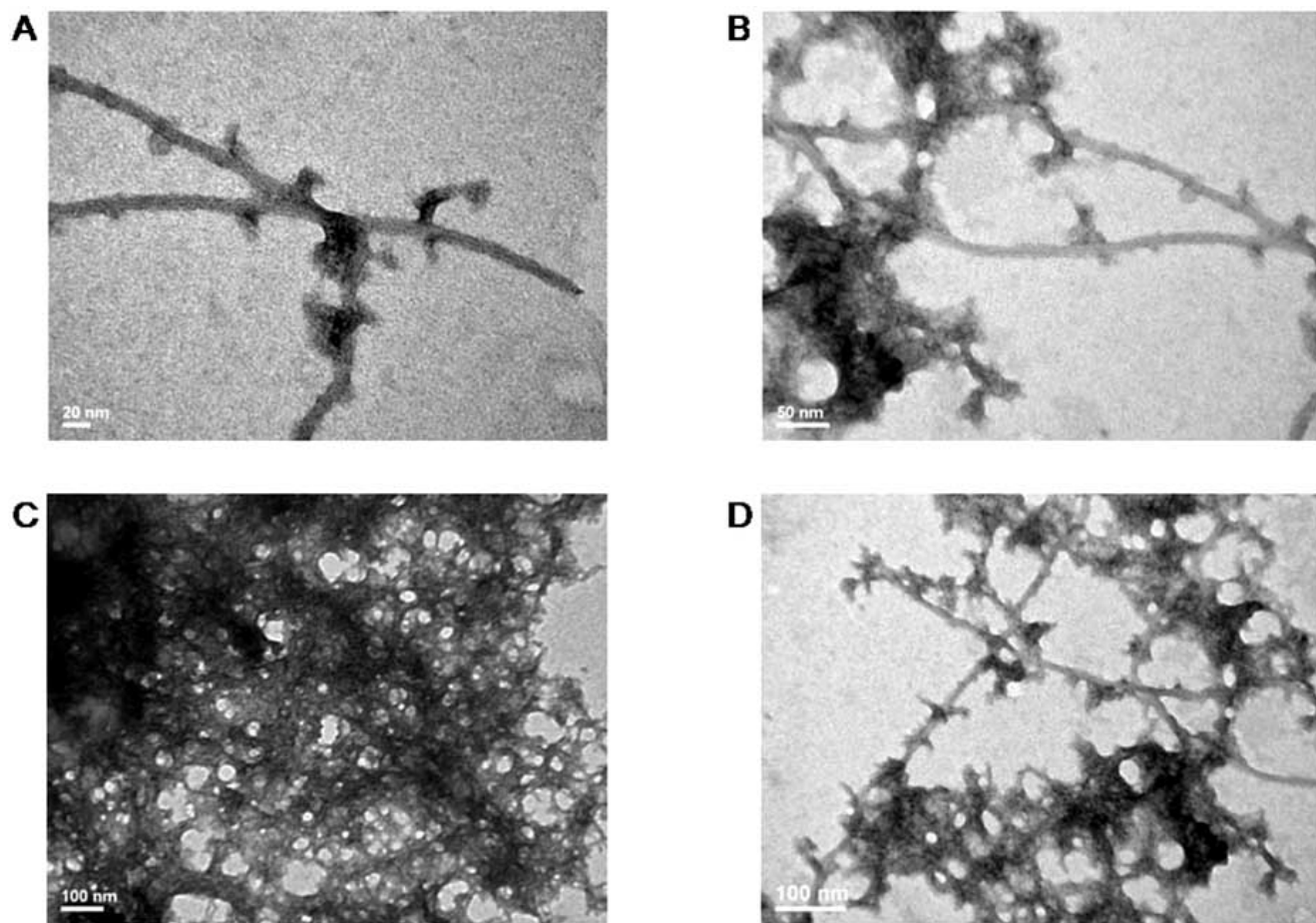


Page 1/1

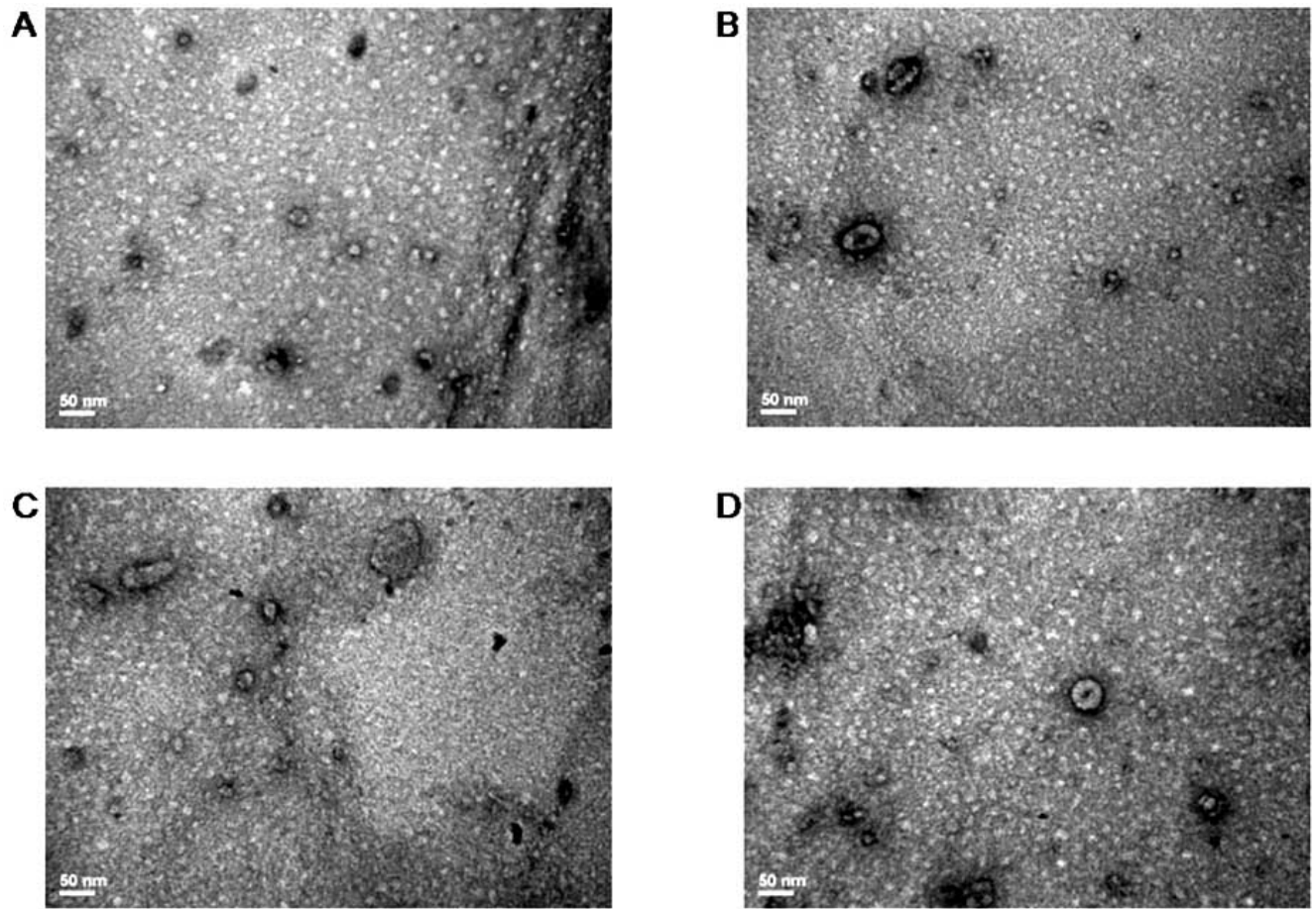
Supplementary Figure 1. The second-derivative spectra of the amide I absorptions of native γ B-crystallin (green) and of its heat-induced (red), cold-induced (blue), UV-induced (black) and refolding-induced (pink) precipitate forms are all shown superimposed together in this image taken from the instrument's screen.



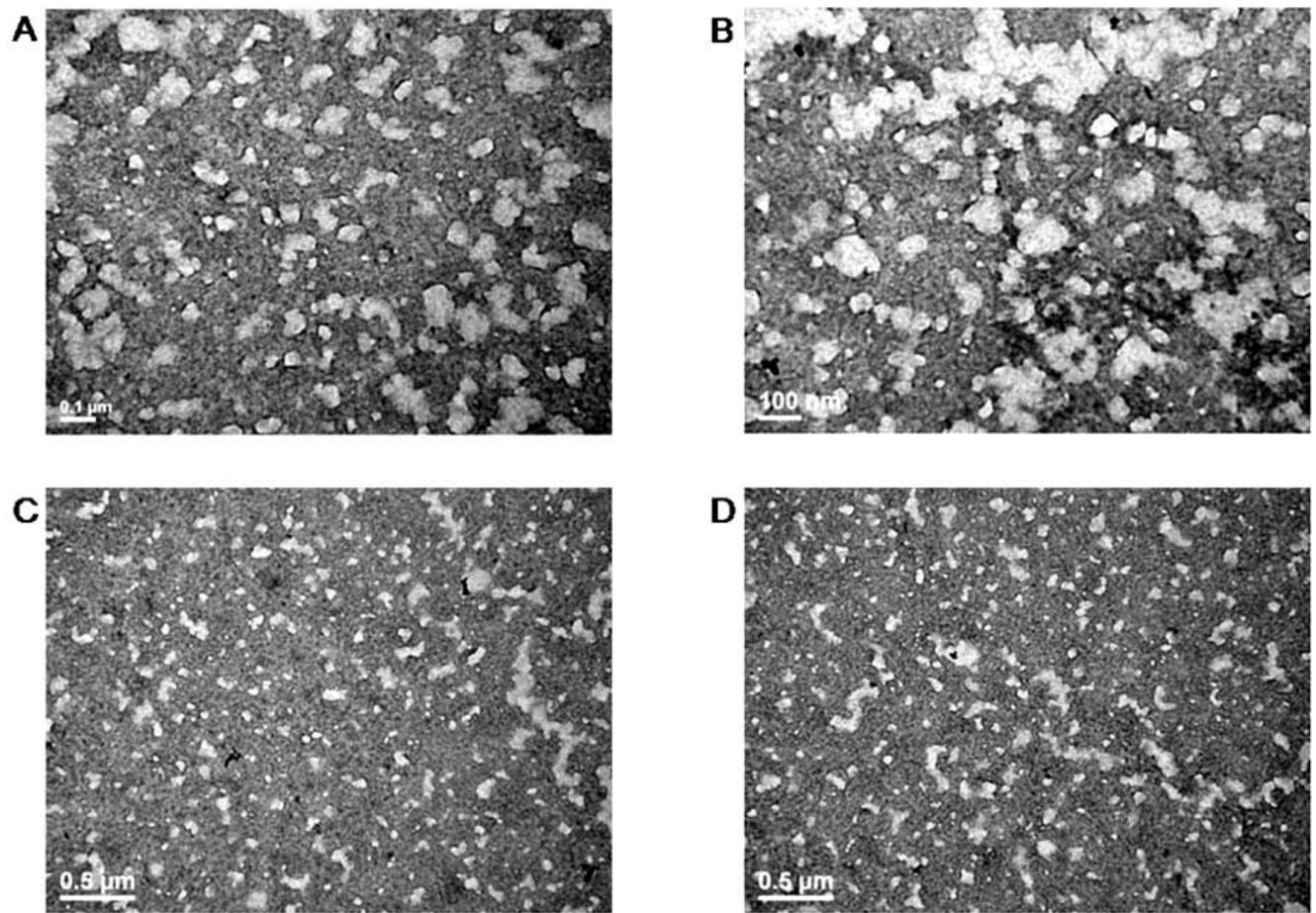
Supplementary Figure 2. Various panels showing different EM fields of heat-induced aggregates.



Supplementary Figure 3. Various panels showing different EM fields of cold-induced aggregates.



Supplementary Figure 4. Various panels showing different EM fields of UV-induced aggregates.



Supplementary Figure 5. Various panels showing different EM fields of refolding-induced aggregates.